



# Global Risk

## Profiles & Audits

### GLOBAL RISK PROFILES & AUDITS PTY LTD

ACN 628 543 957

ABN 686 285 439 47

#### Delivering services to:

- Australia
- Canada
- Ireland
- New Zealand
- United Kingdom
- United States



**Brisbane, Australia**



**+61 451 510 111**



**1300 980 114**



**info@grpa.com.au**



**GRPA.com.au**

### 2019–20 SERVICES

- Free DAI (Desktop Audit Instrument)
- RCP (Risk Context Profile)
- BIR (Business Impact Rating)
- RSC (Risk Surveillance Centre)
- 12 months Risk Services 24/7

## RISK MANAGEMENT FOR THE REAL WORLD

If you are seeking a thoroughly researched and planned approach to the risk management of your organisation then GRPA is for you.

Let us establish a high level of risk maturity within your organisation together with an appropriate risk appetite position acceptable to your executives/shareholders.

GRPA has spent over two years examining a range of expert opinions and associated data concerning four key economic sectors. It has been concluded that these sectors in particular require effective and efficient quality risk governance.

GRPA is in the unique position to offer 12 months professional risk services on a 24/7 basis at a fraction of the cost of a traditional risk management specialist commonly located within a company's structure.

[Click here for details.](http://grpa.com.au/wcg)  
(grpa.com.au/wcg)

## HIGH RISK SECTORS

Aged Care, Business, Child Care, & Education sectors share the following risk context characteristics:

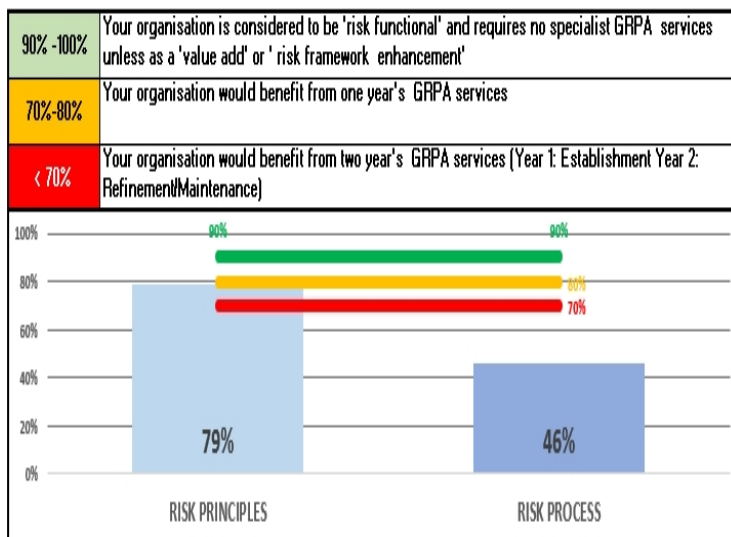
- ✓ Highly regulated operational environments
- ✓ Highly competitive environments
- ✓ Reputation always a key success driver
- ✓ Constant government and community scrutiny

# FREE DESKTOP AUDIT INSTRUMENT (DAI)

Simply visit our website at [www.grpa.com.au](http://www.grpa.com.au) and download our no obligation file. The audit checklist has been developed in direct alignment with the ISO 31000:2018 Risk Standard.



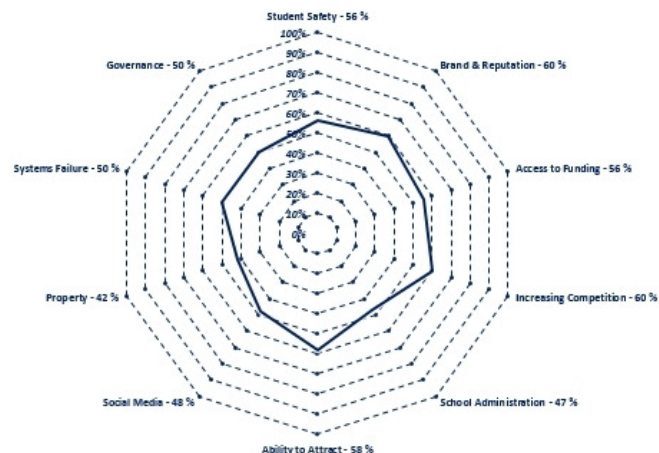
GRPA DAI (Desktop Audit Instrument)					
Section 1 RISK PRINCIPLES			Please choose level	Score	Sum %
Section 1 RISK PRINCIPLES	A-01	Integrated	Partially	2	19 79%
	A-02	Structured	Fully	3	
	A-03	Customized	Fully	3	
	A-04	Inclusive	Partially	2	
	A-05	Dynamic	Fully	3	
	A-06	Relevant information	Partially	2	
	A-07	Human Factors	Partially	2	
	A-08	Continual improvement	Partially	2	
Section 2 RISK PROCESS	B-01	External & Internal Context	Not	1	11 46%
	B-02	Risk Framework	Not	1	
	B-03	Risk Identification	Fully	3	
	B-04	Risk Analysis	Not	1	
	B-05	Risk Levels	Not	1	
	B-06	Risk Oversight/Monitoring	Not	1	
	B-07	Risk Communication	Not	1	
	B-08	Risk Reporting	Partially	2	



Your scores will indicate our recommended level of services if you so choose. Based on ISO 31000:2018 Risk Management Standard DAI will quickly inform you as to the level of risk governance your organisation is currently achieving.

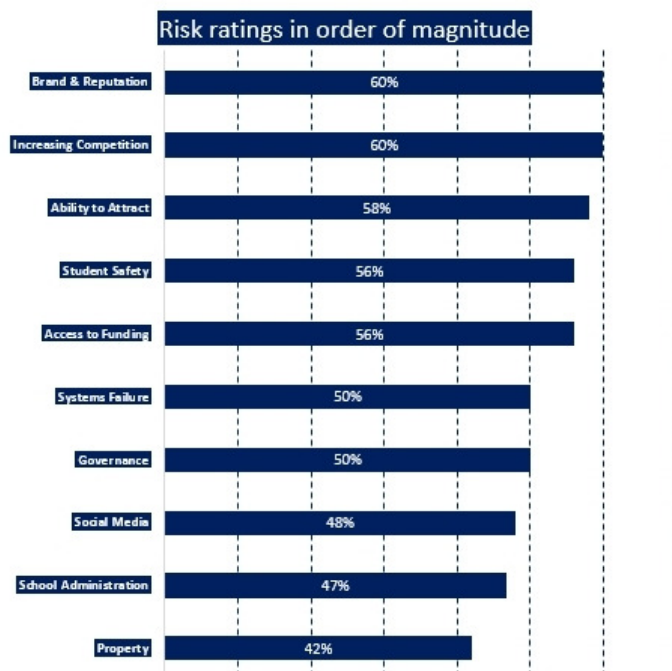
## RISK CONTEXT PROFILE (RCP)

The Risk Context Profile (RCP) is a thoroughly researched and empirical instrument enabling an organisation to both identify and assess the key risk areas which the organisation must manage in order to remain competitive.



Global Risk  
Profiles & Audits

Evaluate Clear About

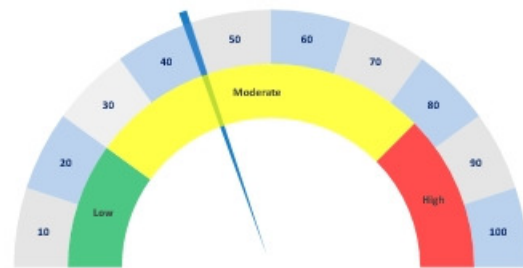


The term 'profile' is deliberately used for three specific reasons:

- ✓ The quarterly re-application of the 'Risk Context Profile' during the period of GRPA Risk Services will provide the Client with a clear indication as to the acceptable level of risk management practiced within the organisation
- ✓ The Client is provided with a prioritised list of high-risk categories and the resulting level of risk exposure to the organisation
- ✓ Enables the 'Business Impact Rating (BIR)' to provide a comparison between the RCP results and 'Key Business Elements' considered essential to business success

## BUSINESS IMPACT RATING (BIR)

Business Impact Rating (BIR) links the results of the organisation's RCP to the key business elements underpinning the organisation thereby providing that organisation with a metered record of the impact of the assessed risk areas on its business activities.

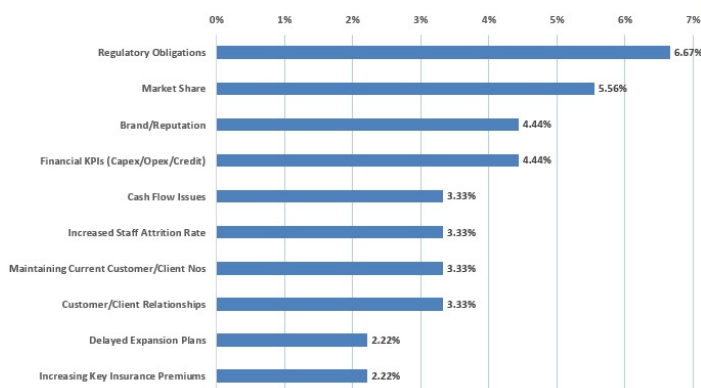


38.9 %

Age Care Business Impact Rating (BIR)



**Global Risk**  
Profiles & Audits



All organisations in the four high risk sectors must constantly ensure that the key business elements are being effectively addressed.



# RISK SURVEILLANCE CENTRE (RSC)

The Risk Surveillance Centre (RSC) is an interactive visual representation depicting dedicated controls for previously assessed key risk areas together with both company and external personnel charged with their management.



SURVEILLANCE		Selection Area	BS05.04	QUARTER	
	Manager	Description	Workers Compensation		
		Comments	Area Comment	QTR 3	
GRPA Risk Management Advisory					
InterConnectivity Matrix	Inter Connectivity	[BS03 Business][BS04 Finance]			
	Level of Control Responsibility	Staff			
	Recommended No of controls	2 Controls			
	Frequency of Controls Reviews (Quarters)	QTR 1	QTR 2	QTR 3	QTR 4

The RSC is the culmination of the GRPA risk management process. The RSC replaces the more traditional risk register thereby ensuring the following:

- ✓ A real time display of risk levels in the organisation
- ✓ A monitoring of existing controls and their levels of effectiveness
- ✓ A record of the GRPA verification process applied to the RSC